



Commission for
CIGE Investigation and
Gathering Evidence

Progress Report 2014-2024

August 2024



**Commission for
Investigation and
Gathering Evidence**

Progress Report 2014–2024

Table of Contents

Foreword by the Head of CIGE - 1

Foreword by the KRG Coordinator for International Advocacy - 2

The Commission for Investigation and Gathering Evidence: investigating ISIL crimes from Duhok - 3

Our Mandate and Method - 3

Our Structure - 5

Collecting evidence of ISIL atrocities in pursuit of criminal justice - 7

Evidence Collection - 7

Information and Evidence Management - 9

CIGE Evidence Management System - 10

Evidence Analysis - 11

Cooperation and Assistance - 13

Identifying missing persons to bring closure and reunification to affected families - 14

Supporting survivors to achieve justice and accountability - 15

Psychosocial Support - 15

Mental Health and Psychosocial Support (MHPSS) and Livelihood Training - 15

Reparations Certification - 17

Legal Support - 17

Building partnerships to achieve our vision - 18

Raising awareness of ISIL atrocities and CIGE's work through outreach - 20

Foreword by the Head of CIGE



I'm pleased to share CIGE's first Progress Report, to introduce our mandate to investigate the vicious crimes committed by ISIL against the ethno-religious minorities in the Sinjar area and Nineveh Plains and highlight our efforts to uphold the rights of victims in adherence to Iraqi and international laws.

CIGE adopts a multidisciplinary approach involving evidence collection, analysis, and preservation as well as providing victim support and collaborating with relevant stakeholders. A cornerstone of this effort has been the cooperation with competent jurisdictions to avoid impunity and ensure that all legal and procedural standards were met. Additionally, CIGE has provided continuous psychosocial, medical, and legal support for victims throughout the investigation processes.

CIGE's goal for the next phase is to further contribute to national and international proceedings with global standard cases and coordinate efforts in prosecuting perpetrators to ensure that justice is pursued with the highest standards, and victims receive the necessary support throughout the legal process.

As the head of CIGE, I would like to express my gratitude to the Kurdistan Regional Government for their infinite support to CIGE from the time of its establishment to date. The decision of the regional government to establish institutions addressing the atrocities of ISIL in Iraq, such as CIGE, and their continuous support and defense of this cause has been invaluable. Moreover, I highly appreciate all the local and international stakeholders for their contributions to enhancing CIGE's operations and advancing the path towards justice for the affected community.

Investigative Judge

Foreword by Dr Dindar Zebari, KRG Coordinator for International Advocacy



The rise of ISIL brought unspeakable atrocities to the people, cultures and heritage of Iraq, including the Kurdistan Region. In response, the Kurdistan Regional Government (KRG) promptly acted to halt the advance of ISIL, reclaim territories and bring stability to the region as well as to secure justice and accountability for their wrongdoing and the vast human suffering they inflicted. Our commitment to justice and the rule of law led us to establish CIGE in September 2014. This Commission was, and remains, pivotal in our efforts to ensure accountability for the crimes committed by ISIL and to uphold the rights of the victims.

In this context, we commend the outstanding efforts of CIGE, which has played a critical role in collecting, preserving, and sharing evidence through cooperation and judicial assistance. The KRG recognizes and appreciates the dedication that CIGE has brought to this endeavor as well as its advances in uncovering the truth about the atrocities committed by ISIL and supporting victims and survivors. I commend CIGE's efforts in the identification of missing persons, which has provided much-needed closure to grieving families, and in supporting victims through dedicated assistance programs. Furthermore, I highlight the importance of CIGE's fledgling cooperation with national and international stakeholders to support fair and impartial criminal proceedings.

The KRG reaffirms its unwavering commitment to achieving justice for the victims of ISIL's crimes. We advocate for the recognition of these crimes as genocide and emphasize the importance of comprehensive evidence collection, working in close collaboration with our international partners.

A handwritten signature in blue ink, consisting of a large, stylized oval shape with horizontal lines underneath, representing the signature of Dr. Dindar Zebari.

Dr. Dindar Zebari

The Commission for Investigation and Gathering Evidence: Investigating ISIL crimes from Duhok

Our Mandate and Method

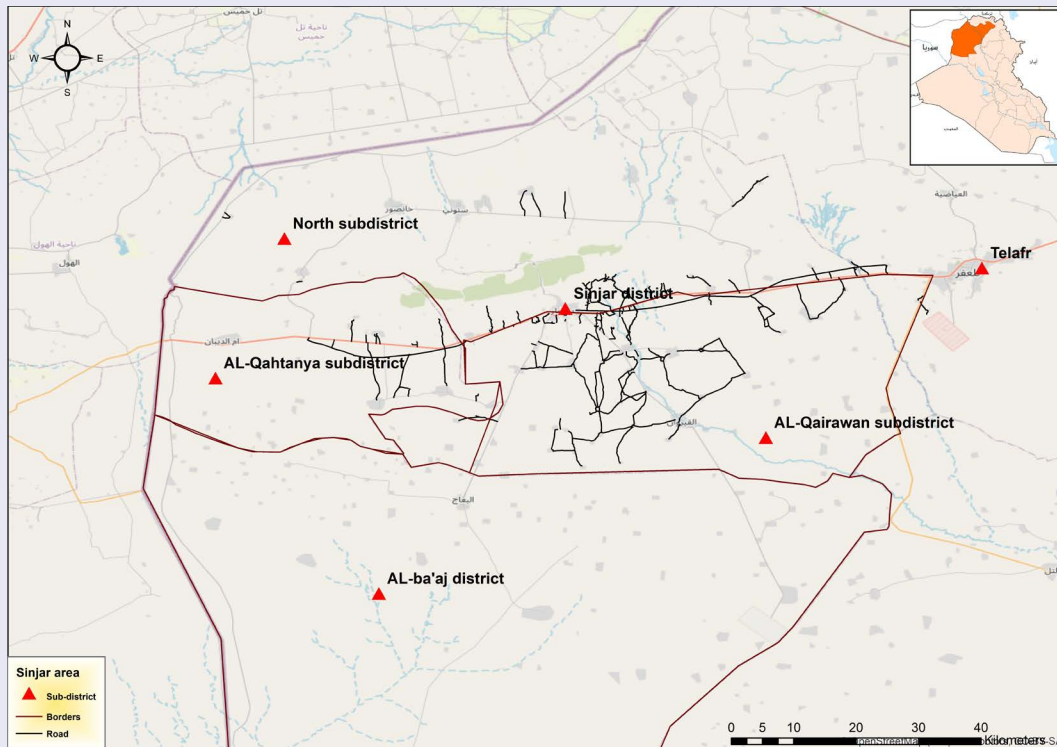
CIGE is a judicial body established by the Judicial Council of Kurdistan to investigate acts committed by ISIL against ethno-religious minorities in the Sinjar area and Nineveh plains from 10 June 2014 that may amount to genocide, crimes against humanity, and war crimes under international law. With the powers of an investigative court, CIGE has the authority to investigate crimes, gather and analyze evidence, prepare reports and statements that can be used in legal proceedings, and facilitate third-state investigations through international cooperation.

The temporal mandate of CIGE is to investigate crimes since the 10th of June 2014, and its spatial mandate is to investigate cross-border violations in regards to victims from Sinjar area and Nineveh plains area that were moved into Syria and elsewhere. CIGE is guided by principles of justice and accountability and is committed to upholding the rights of victims, supporting fair, independent, and impartial criminal proceedings in adherence with international law.

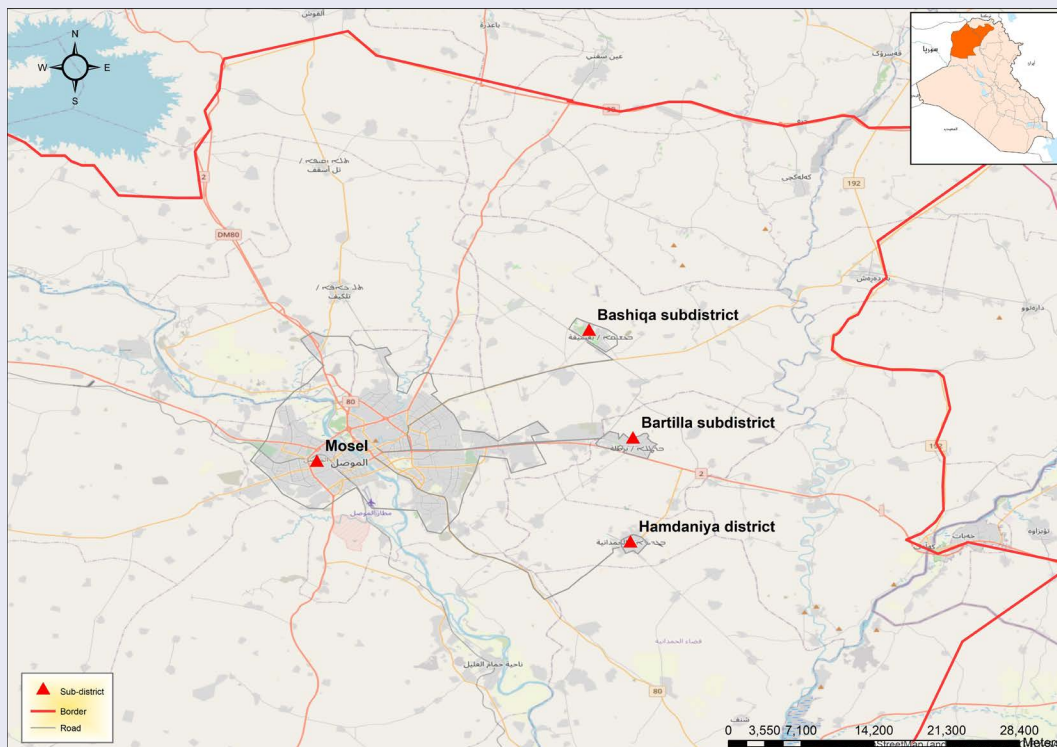


CIGE operates in the following areas:

Sinjar region

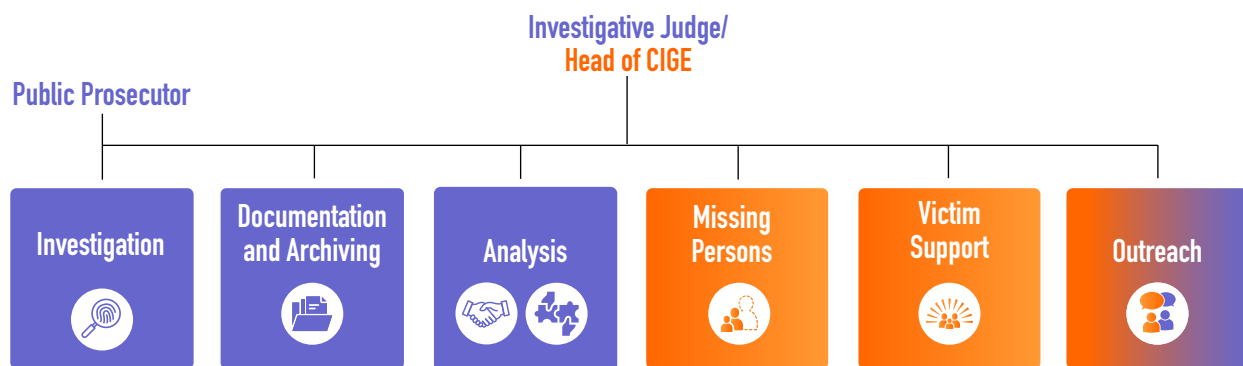


Ninevah plains



Our Structure

CIGE is constituted with the powers of an investigative court under Iraqi law. Since its establishment, CIGE has pursued its mandate to investigate ISIL crimes in the Sinjar area and Nineveh Plains in accordance with Iraqi law and aims to adhere to relevant international law, international standards and best practices in order that its evidence and analysis can be used to facilitate fair and independent criminal proceedings before competent national, regional or international courts.



An investigative judge leads CIGE, in accordance with the provisions of Article 3/31 of the Judicial Power Law No. 23 of 2007 of the Kurdistan Region, as well as the Criminal Procedure Code No. 23 of 1971.

Investigative Judge/ Head of CIGE

Oversees all CIGE operations including investigation, analytical, cooperation and assistance, survivor support and outreach.

Committed to the integration of international standards within CIGE's operations to guarantee the principles of justice, fairness, and respect for human rights.

Public Prosecutor

Monitors the progress of investigations.



Investigation Unit

Police and judicial investigators conduct interviews with victims and witness interviews to complete victim statements and implement investigative procedures.



Documentation and Archiving Unit

Organizes, preserves, digitizes, archives and retrieves evidentiary materials, maintains and records chain of custody and forensic integrity, ensures confidentiality and sensitivity protections through fully-customized, secure, evidence management and retrieval system and physical archive;

Ensures secure storage and retrieval of information according to access restrictions, security and confidentiality, and control panels.



Analysis Unit

Conducts evidence review, tagging, visualization and analysis of evidentiary materials in support of criminal statements, analytical reports and requests for assistance, adhering to conditions of confidentiality and informed consent



Missing Persons Unit

Completes missing person files, gathers pre-mortem data and conducts DNA tests to identify missing persons, participates in the exhumation of graves and recording of forensic data in coordination with relevant civil society organizations (CSOs) and national stakeholders, including the KRG Ministry of Interior, Directorate of Yezidi Affairs, Office of the Kidnapped Affairs, Mass graves Directorate of Martyrs Foundation, and Medico Legal Directorate in Baghdad.



Victim Support Unit (VSU)

Engages with survivors and victims to address their psychological and emotional wellbeing before, during and after engagement with CIGE;

Provides referrals for further psychological and medical treatment and certification to re-issue lost documents.

Carries out welfare trainings to survivors within IDP Camps in Duhok and Zakho



Outreach Unit

Pursues transparency of CIGE's activities through outreach, communications, and information dissemination.

Collecting evidence of ISIL atrocities in pursuit of criminal justice

Evidence Collection

CIGE remains the primary KRI investigative authority with responsibility to investigate potential international crimes committed by ISIL against ethno-religious minorities across Sinjar area and the Nineveh Plains. To do this, CIGE collects physical and documentary evidence from a range of sources including individuals, physical locations, Iraqi governmental bodies, international and national CSOs, call-data records, media and open source, in accordance with Iraqi national law and aims to adhere to international law, international standards and best practices, in order that its evidence can be used to facilitate fair, independent and impartial criminal proceedings before competent national, regional or international courts, to ensure that perpetrators are held accountable for their crimes.

To date, a significant focus of CIGE's investigation has been the conduct of victim and survivor interviews, for the purpose of developing victim case files, where it has been able to draw on its geographic proximity to affected communities and survivors, as well as the support and referral systems of its Victim Support Unit and has also made inroads into engaging with victims amongst the global diaspora. In this regard, CIGE has completed more than 2890 victim statements since it was created, following international standards regarding informed consent.

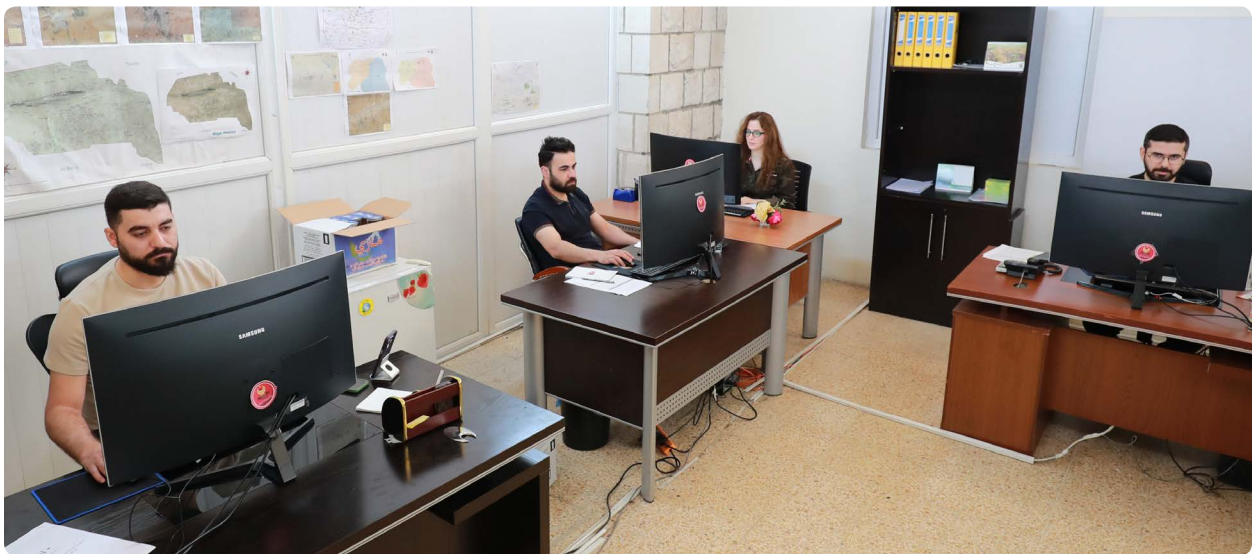


CIGE has jurisdiction to investigate crimes perpetrated against all ethno-religious minorities affected by ISIL across Sinjar area and the Nineveh Plains. Recognizing that ISIL targeted a diverse range of groups, including Yezidi, Christian, Shia, Turkmen, Kaka'i, and Shabak communities, CIGE is dedicated to addressing the suffering and seeking justice for all victims. Its mandate ensures that CIGE is open and committed to serving every affected community.

2,902 Victim statements completed

Integrating Investigations and Analysis

Since 2023, CIGE has worked to integrate its investigative and analytical activities to ensure that CIGE is able to quickly identify gaps in its evidence, quickly focus its investigations and resources in those areas and close the information or evidence gaps. Through daily mentoring and regular training on investigation practices, collection priorities and investigation planning, CIGE Analysts and Investigators have been able to integrate a fused and non-linear approach to investigations as a whole. The adoption of collection plans and information requirements has enabled analysts to provide input to the investigators, support interview planning, and conduct gap analysis of a statement immediately upon its submission. As part of its integrated approach, CIGE is now able to deploy an investigative team which includes an analyst to support and conduct interviews related to specific taskings. One such example has been the ongoing repatriation task, which seeks to return the remains of victims of the Khanasour and Bardiya massacres to their relatives.



UNITAD Training on Digital Forensics and Open Source Intelligence

In February 2024, 10 CIGE analysts participated in a 3-day long training by UNITAD's Forensics Science Unit on digital forensics and open-source intelligence (OSINT) aimed at enhancing the data collection and analysis skills of CIGE's personnel.



Information and Evidence Management



To enable CIGE to process the massive amounts of information contained within its evidence holdings, it has adopted an evidence management system, similar to the evidence repositories or e-platforms used by UNITAD and IIIM. Fully owned and operated by CIGE, the fully-customized Arabic-English evidence management system EMS guarantees the uninterrupted chain of custody, forensic integrity and reliability of data. A series of protections and controls are in place to record informed consent procedures and protect highly confidential and sensitive information, while access to the system is subject to a range of restrictions and controls. The system supports multiple analytical features frequently used in international crime analysis, as well as case-building, case-management features and request for assistance tracking system. Prototypes of this system have been used by the Defense Unit of the Iraqi High Tribunal, as well as investigative and prosecutorial entities in Bosnia and Herzegovina, Colombia, Indonesia and Ukraine, while its case-building framework informed the work of the International Criminal Court through the form of its 'in-depth evidence analysis charts'.

Since 2021, CIGE has been in the process of implementing detailed procedures for the preservation, storage, retrieval, provision and use of its evidence and analysis that conform to international standards. Its personnel have undergone extensive training, mentoring and capacity development to ensure their ongoing awareness of and compliance with international standards, while CIGE's physical and digital infrastructure has been improved to bring it closer in line with international environments. CIGE's transition to a fit-for-purpose evidence management system has taken place as part of a capacity development and technical assistance with international partners.

In addition to the secured and strictly accessed EMS, CIGE maintains a well-preserved collection of physical archives. The institution also operates a climate-controlled physical evidence archive that adheres to international security standards for the archiving of physical materials. This ensures the integrity and preservation of evidence in accordance with international best practices. To date, CIGE has digitized more than 23,000 documents and registered 37,876 documents in the EMS.



CIGE Evidence Management System

Customize



Thematic and geographical context



Applicable legal frameworks



Languages



User control

Archive and Structure



Documentation



Criminal incidents | Contextual Facts



Suspects | Involved Institutions



Victims | Witnesses | Protected objects

Analyze



Fact-finding



Gap analysis



Evidence



Map patterns and linkages



Legal requirements of relevant crimes and liabilities (Rome Statute as default)

Outputs



Sanctions listing



Case building | Trial proceedings



Reparations



Judicial Assistance | Cooperation



International Criminal Law cases



Human rights cases



"The new EMS has significantly improved our work by streamlining the process of recording and managing different types of information and evidence. Additionally, the EMS enhances our ability to conduct searches and retrieve information from documents efficiently in accordance with security and confidentiality protocols. It organizes the retrieval process, enabling us to store, manage, and process a collection of documents without being overwhelmed by excess information. This has improved our capability to locate and extract relevant data, ultimately making our work more efficient and reducing the time spent on information management tasks."

– Name redacted, Data Entry Clerk

+23,000 Documents digitized;
37,876 Documents registered in the EMS



Evidence Analysis

CIGE analysts first review and tag evidence registered within the EMS, before carrying out other analytical techniques to identify patterns and develop factual, structural and legal analysis that can support analytical reports, statements and requests for assistance, adhering to conditions of confidentiality and informed consent. This work has been supported and guided through dedicated capacity development and technical assistance partnerships with international partners.



"With the new EMS we are able to carry out a range of analytical tasks quickly and efficiently, helping us to understand the totality of our evidence. For example, with our previous system adding various file types, and then linking them to cases was cumbersome and hard to retrieve. The new EMS supports this process, ensuring easy integration and retrieval of information, enabling us to process more evidence with far greater accuracy and speed. Moreover, the new EMS has enabled us to group individual violations into bigger incidents, based on time and location, to identify patterns and generate different forms of fact-based analysis."

–Name redacted, Analyst 1



Success story

Since 2022, a team of CIGE analysts has been established to receive, process and prepare requests for assistance received from credible justice partners and have undergone detailed training and on-the-job mentoring, regarding the handling of incoming Requests for Assistance (RFAs). This includes identifying search terms, creating search plans, conducting the searches, reviewing search results for potential relevance, summarizing the potentially relevant search results, and drafting RFA responses. In parallel, the team has developed standard operating procedures, protocols and guidelines to ensure consistent and efficient practice in line with international practices. CIGE has received and responded to several requests for assistance from credible authorities in third states.



"The previous EMS of CIGE consumed much time and had old searching methods. This didn't allow for detailed analysis to ensure accuracy and reliability. On daily basis, analysts must sift through large datasets, verify sources, and cross-reference information to avoid errors and biases. Since the new EMS was launched, analytical work became much easier. The process takes less time and searching for information has improved. Especially with RFAs, as responding to these requests within a reasonable time frame is crucial for maintaining operational efficiency and fostering trust. Prompt responses ensure that those seeking help receive the necessary support and resources to address their needs without undue delay and the new EMS allows that."

—Name redacted, Analyst 2

Cooperation and Assistance

As part of its legal mandate, CIGE is able to support the investigations of competent third states, regional or international courts or investigative mechanisms, into ISIL crimes against ethno-religious minorities from Sinjar area and Nineveh Plains. To advance this goal, CIGE has worked to develop relationships with critical law enforcement agencies in third states and to establish robust and efficient communication channels for the receipt and transmission of requests for assistance. Dedicated analysts have been trained to carry out search and analysis tasks in support of incoming requests, and to draft analytical reports, while this process is strictly governed by confidentiality and security requirements including informed consent procedures.

CIGE participates in EUROJUST Genocide Network's 34th Meeting

In November 2023, the investigative judge and head of CIGE, participated in the EUROJUST Genocide Network's 34th Meeting, which was dedicated to the investigation and prosecution of core international crimes committed by ISIL against the Yazidi community. The judge spoke during the open session, providing insight into CIGE's work and efforts to engage in global justice initiatives to prosecute international crimes committed by ISIL members, noted in the conclusory note as follows:



"Network members appreciated the contributions of the Commission of Investigation and Gathering of Evidence (CIGE) to its mandate to investigate and gather evidence of the core international crimes committed against the Yazidis. Network members welcomed the Commission's stated aim to work with other partners at the international level to ensure justice for survivors."



Identifying missing persons to bring closure and reunification to affected families

In the aftermath of the atrocities perpetrated by ISIL in Iraq, many individuals were abducted, forcibly disappeared or displaced and whose status, location and condition have yet to be identified. CIGE collaborates closely with various governmental bodies and CSOs to identify missing persons. This includes the location, identification and exhumation of gravesites, including the removal of human remains, personal effects and other evidence, their dignified storage and return and the exchange and disposition of crucial forensic data, such as DNA samples, to crosscheck against collected records and aid in the identification process.

CIGE registers claims about persons went missing, which include biographical details of the missing persons and their relatives and gathers pre-mortem data from relatives and other credible sources. This information is combined with information from other partners to analyze data, to create detailed profiles of the missing individuals with the aim to establish the identity and remains of missing persons.



Furthermore, CIGE engages in ongoing dialogue with families of the missing, providing them with psychosocial support and updates and involving them in the identification process where appropriate. CIGE aims to provide some measure of solace and closure to families affected by the conflict.



"CIGE asked me for a sample of blood to help me find my missing family members. After they were rescued, my psychological state and that of my rescued family members improved very much and it helped us lessen the psychological burden we had endured for so long..."

— (Name redacted) Family member of missing person

2,856 Completed missing persons case files

3,565 DNA donors

583 Missing persons - alive

247 Missing persons - remains

2,016 Missing persons - unaccounted

129 Identified gravesites registered with CIGE

Supporting survivors to achieve justice and accountability

Victims of atrocities such as those committed by ISIL may endure profound suffering, including physical harm, psychological trauma and societal stigma. CIGE and its team of psychologists, aim to ensure that victims encounter a safe and reassuring environment throughout their engagement with CIGE, without further harm, to the fullest extent possible.



Psychosocial Support

CIGE provides psychosocial support to victims and survivors upon initiation of a case file. Psychologists from the Victim Support Unit (VSU) carry out psychological and vulnerability assessments of victims upon initiating a case file, offer essential counseling services before they provide their statement and monitor victims' wellbeing before, during and after they provide their statement. In recognition of specific vulnerabilities regarding sexual and gender-based violence, victims' statements are taken by investigators of the same gender as the victim. Once a victim has provided their statement, the VSU carries out a further assessment including referrals for psychological or medical support from CIGE's referral network of psychological centers or medical facilities, which CIGE monitors regularly.

2,750 survivors have undergone psychosocial assessment

Mental Health and Psychosocial Support (MHPSS) and Livelihood Training

The VSU carries out training programmes on mental health and psychosocial support with residents of Internally Displaced People (IDP) camps in Duhok and Zakho, to facilitate the resilience and recovery of survivors who continue to live in often challenging circumstances.



Focus story

Between late 2021 and June 2024, CIGE was able to provide livelihood trainings for victims of ISIL atrocities in coordination with GIZ Civil Peace Services. The project allowed the Victims Support Unit (VSU) at CIGE to conduct weekly visits through three projects (each for 6 months) to IDP camps in Sharia, Qadiya, and Esian, Kabartu, Bersif, and Badgid Kendal, to provide trainings on life skills, raising awareness about survivors' rights, and trauma coping strategies.



"The training sessions on how to cope with trauma have had a good impact on my life. They've helped me navigate through challenging times. I've found solace in the support provided during my grieving process for my brother. Also, I've been able to offer comfort to my mother in her bereavement for her son. The training has been helpful in allowing me to try to overcome adversity and find strength in supporting others."

-Name redacted, Training Participant

Reparations Certifications

On 1 March 2021, the Iraqi Council of Representatives adopted the Yezidi Survivors Law No. 8 of 2021 (YSL), which established a groundbreaking reparation program for Yezidi, Turkmen, Shabak, and Christian survivors of ISIL atrocities. Applications were opened on 7 September 2021. CIGE assists survivors by issuing official supporting letters that affirm survivors' eligibility for reparations. These letters play a pivotal role in validating survivors' experiences and advocating for their rights to compensation and support. CIGE also refers survivors to other organizations for assistance in completing and processing their applications for reparations.

1,308 Reparations Certificates issued since 07 September 2022

Legal support

During periods of conflict and upheaval, essential documents such as identification papers, birth certificates, and property deeds are frequently lost or damaged, profoundly affecting individuals' identities and legal standing. Recognizing the critical nature of these challenges, CIGE issues certificates confirming document loss, which are pivotal for initiating re-issuance processes through governmental channels. CIGE works to provide comprehensive assistance in restoring vital documents crucial for upholding legal rights and rebuilding lives amidst adversity. Additionally, CIGE offers referrals to a network of organizations and resources tailored to meet diverse needs. Whether survivors require legal aid, advocacy services, or other forms of support, CIGE strives to connect them with the necessary resources.

7,040 certificates have been provided to survivors enabling the re-issuance of lost documents and other legal documentation



Building partnerships to achieve our vision

CIGE actively seeks diverse partnerships to enhance its operations, including embedding international law standards and best practices across its work and facilitating the provision of essential services. In parallel, CIGE pursues a cooperation and judicial assistance programme in pursuit of its investigative goals, including the fulfillment of requests for assistance from credible investigative entities of third states. CIGE remains appreciative to its partners for their continued support and contributions to enhancing its operations and advocating for this cause. It also remains open and committed to engaging with stakeholders where its mandate allows.

Capacity Development and Technical Assistance

CIGE pursues long-term partnerships with organizations with expertise in capacity development and technical assistance in all aspects of the investigation of complex international crimes by non-state actors. To date such partnerships have bolstered CIGE's operational capabilities, including investigation best practices digitization of evidence, evidence management and analysis, requests for assistance, general legal assistance, victim and survivor support, and outreach.



Global
Rights
Compliance



Implemented by



Ziviler Friedensdienst
Civil Peace Service

Thematic Trainings

CIGE also participates in specific trainings led by subject-matter experts that can increase its skills, techniques or awareness of relevant aspects of its practice and welcomes such support. Since 2023, CIGE has received trainings on a range of topics including secondary trauma led by the Institute of Psychotherapy of the University of Duhok, and digital forensics and OSINT, led by UNITAD.

Medical and Psychosocial Services

CIGE continues to maintain and expand its network of service providers who are able to provide qualified and appropriate services to victims and survivors, including specialized psychological centers, medical facilities and CSOs focusing on psychosocial support.

Missing Persons

CIGE coordinates closely with national stakeholders to find, identify and repatriate remains of missing persons, further refine methodologies for identification and to facilitate the exchange of pertinent information related to missing individuals, including CSOs and national institutions such as the KRG Ministry of Interior, Directorate of Yezidi Affairs, Office of the Kidnapped Affairs, Mass graves Directorate of Martyrs Foundation, and Medico Legal Directorate in Baghdad.

Survivor Groups

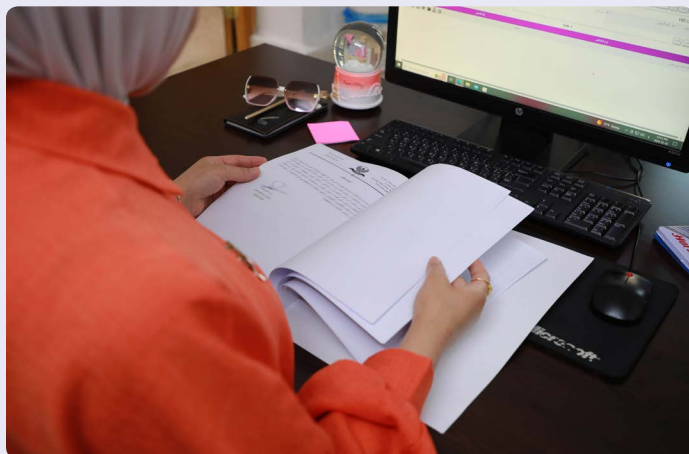
Engagement with survivor groups, including tribal leaders and managers of IDP camps, plays a pivotal role in enabling CIGE to establish connections with remote and diaspora survivors. This collaboration enhances CIGE's understanding of survivors' experiences and challenges, informing its support initiatives effectively.

NGOs and CSOs

CIGE is committed to fostering collaboration and cooperation with NGOs and CSOs to enhance support for survivors. As part of this commitment, CIGE actively participates in several initiatives, such as the Network of Legal Advisers, where legal advisors from national and international CSOs in KRI convene to discuss collaborative initiatives and frequently participates in other events and programs such as those of the Coalition for Just Reparations (C4JR). CIGE remains open to engaging and partnering with any NGOs that align with its mandate.

Cooperation and Judicial Assistance

CIGE provides assistance to the criminal investigations of several credible third states and international organizations by actively processing and responding to requests for assistance, in accordance to Iraqi national laws on mutual legal assistance.



Raising awareness of ISIL atrocities and CIGE's work through outreach

CIGE's outreach efforts are designed to empower survivors, raise awareness, and expand cooperation opportunities among justice professionals. CIGE engages directly with survivors, providing information on their rights and available support services. This includes outreach events aimed at explaining CIGE's work and support, and other life skills techniques on how to cope with critical issues such as violence prevention, anger management, and early marriage to enhance their mental and psychological well-being. To raise awareness about ISIL atrocities, CIGE conducts targeted seminars, participates in international forums, and engages with media outlets to contribute to advocacy efforts for the formal recognition of these crimes as genocide. By this, CIGE aims to foster a deeper understanding of the gravity of these atrocities within the global justice community. Additionally, CIGE conducts awareness raising campaigns through media platforms to dismantle stigma around victims, preventing re-traumatization.

Moreover, CIGE is committed to expanding cooperation with national and international CSOs, governmental bodies, and justice partners. This involves active participation in official events, hosting and attending collaborative visits, and engaging in specialized conferences and open discussions. These initiatives are crucial for refining methodologies in the pursuit of justice for ISIL victims and ensuring the non-recurrence of such atrocities.

33 Life skills trainings were delivered to victims in IDP camps in 2023

33 Seminars were conducted to inform survivors about their rights in 2023

22 Media appearance by CIGE

3 Events were hosted for NGOs since 2023

7 Justice partners were received at CIGE since 2022



German Foreign Minister visits CIGE

On August 3, 2023, the German Foreign Minister and the Consul General Delegation in Erbil visited the Commission for Investigation and Gathering Evidence (CIGE) in Duhok. During the visit, they held discussions with the Head of CIGE and its staff, who provided an overview of the CIGE's activities. Both parties also discussed potential cooperation opportunities.



Commemoration of the Ninth Anniversary of the Yazidi Genocide

Under the auspices of the Governor of Duhok, various authorities, including the CIGE, General Directorate of Martyrs Affairs, General Directorate of Culture and Arts, and Lalish Cultural Center, commemorated the ninth anniversary of the Yazidi genocide in Sinjar. The event at the University of Duhok's conference hall on March 8, 2023, involved female survivors, their families, and a broad representation from Duhok and Sinjar communities, government bodies, civil society, and media. It emphasized the urgent pursuit of justice, accountability, and dignified return of displaced Yazidis to their homelands.



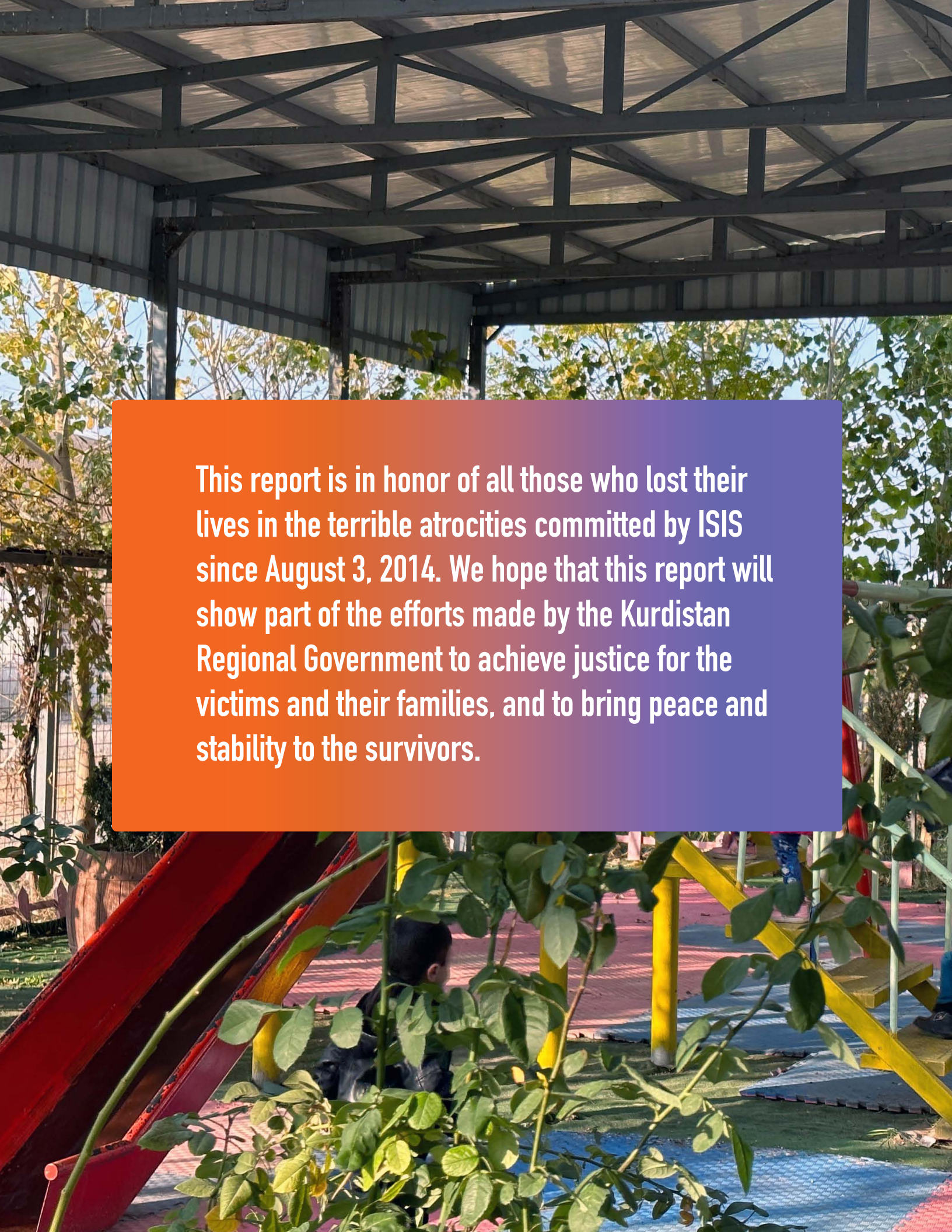
Meeting of Legal Advisors

As a member of the network of Legal Advisors from 14 CSOs, CIGE hosted the monthly meeting of the network, on February 28 of 2023. CIGE's new effective evidence management system and analytical work were presented. The meeting also included updates on legal and psychological aid for IDPs, refugees, ISIS victims, and practices for case referrals among NGOs.

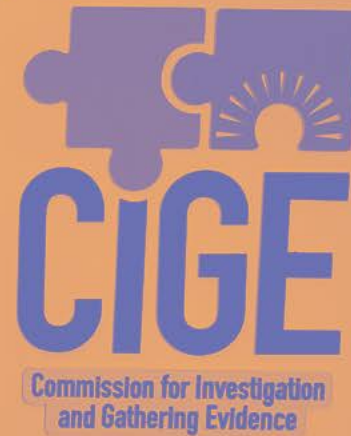


Awareness Symposium to prevent violence against women

On November 25, 2023, to mark the International Day for the Elimination of Violence against Women, the Victim Support Unit at CIGE, in partnership with GIZ, organized a one-day awareness seminar across three IDP camps. Each camp saw the participation of 50 individuals. The seminar aimed to recognize various patterns of violence and to disseminate effective strategies to combat violence against women. Participants expressed satisfaction with the event, affirming their intent to apply the new knowledge gained.

A photograph of a playground under a metal structure. The structure has a grid-like roof and is surrounded by trees and foliage. In the foreground, there are green plants with small yellow flowers. A child is partially visible behind the plants. The text is overlaid on a gradient background that transitions from orange on the left to purple on the right.

This report is in honor of all those who lost their lives in the terrible atrocities committed by ISIS since August 3, 2014. We hope that this report will show part of the efforts made by the Kurdistan Regional Government to achieve justice for the victims and their families, and to bring peace and stability to the survivors.



**Commission for
Investigation and
Gathering Evidence**

Learn more about CIGE's work and achievements by visiting us at:
Azadi Road, Nawroz quarter, 1003Ab, 99442

+ 964 (0) 750 414 7945

Info@cige.gov.krd

www.cige.gov.krd

Facebook: CIGE.KRD

X: @cige_duhok

YouTube: @cigekrd



Knowledge
Management
Fund

Knowledge
Platform
Security &
Rule of Law

This report was made possible through a collaborative project between the Commission for Investigation and Gathering Evidence and the Case Matrix Network, which was funded by the Knowledge Management Fund of the Knowledge Platform Security and Rule of Law.